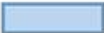
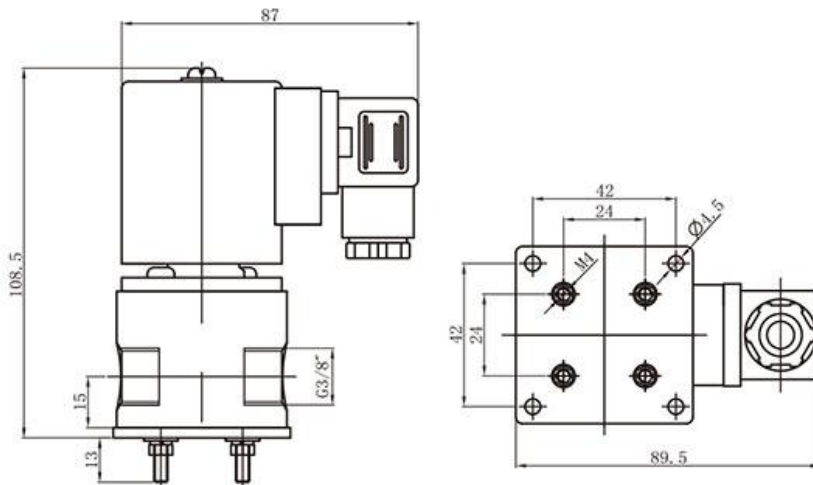
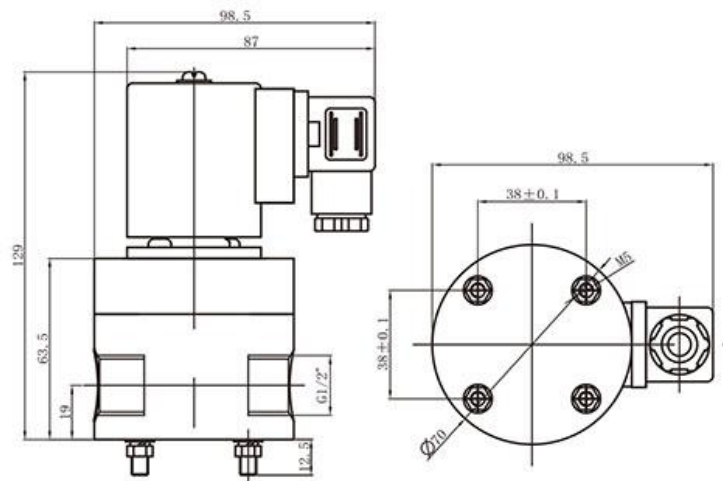


1			2	3	4	5	6	7	8
Sc72			Coil Types	Voltage	Seal Material	Body Material	Pipe Size	Orifice	Options
S	C	72	D	A20	V	41	02	03	
S= Special valve	C= Normally Closed	72= Anticorrosive Solenoid valve	D= Plastic molding coil A=Metallic Housing W= Metallic Housing Lead wires	A10=AC110V A20=AC220V D12=DC12V D24=DC24V	V=VITON T=PTFE	41= PTFE	02=1/4" 03=3/8" 04=1/2" 05=3/4" 06=1" M8=M8 x 1	03=3.0 05=5.0 08=8.0 10=10 15=15 20=20 25=25	L= Neon Lamp



SC72-8, SC72-10



SC72-15~SC72-25

MODEL	D	H	C	G
SC72-15	Φ70	130	19	1/2"
SC72-20	Φ80	137	20	3/4"
SC72-25	Φ95	150	29	1"

## Specification and Features

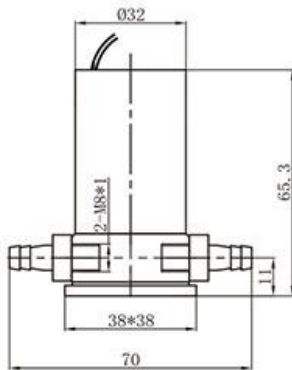
1. 2 way solenoid valve
2. Body Material: PTFE
3. Diaphragm: VITON
4. Media: strong acid, strong base (alkali)
5. Mounting: flow as the arrow. Life is best for growth level installation
6. No leakage



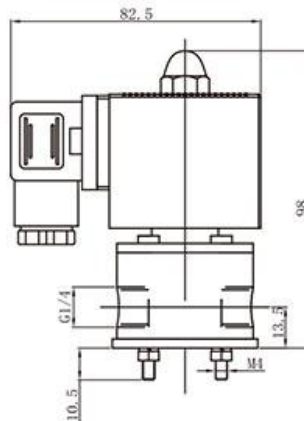
## Valve Selection Lis

Pipe Size G	Orifice mm	CV rate	Pressure ( bar )		Coil Type  To confi gure	Power		Extensions Dimensions L x W x H	Weight KG	Model Code 220VAC 50/60HZ
			acid-base Air	acid-base Water		AC	DC			
			AC	DC		220V	24V			
M8 x 1	3	1.2	0-2	0-2	W	8	10	38 x 38 x 65.3	0.25	SC72WA20T41M803
1/4"	5	1.2	0-4	0-4	D	17	20	48 x 48 x 98	0.45	SC72DA20V410205
3/8"	8	0.23	0-4	0-4	A	17	17	52 x 52 x 109	0.8	SC72AA20V410308
	10	7.5	0-4	0-4	A	17	17	52 x 52 x 109	0.8	SC72AA20V410310
1/2"	15	7.5	0-6	0-6	A	17	17	70 x 130	1.15	SC72AA20V410415
3/4"	20	13	0-6	0-6	A	17	17	80 x 140	1.35	SC72AA20V410520
1"	25	13	0-6	0-6	A	17	17	95 x 150	1.75	SC72AA20V410625

trend chart



SC72-3



SC72-5

