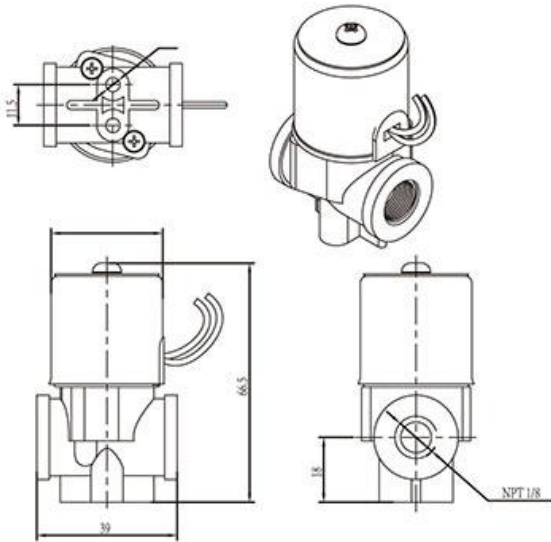
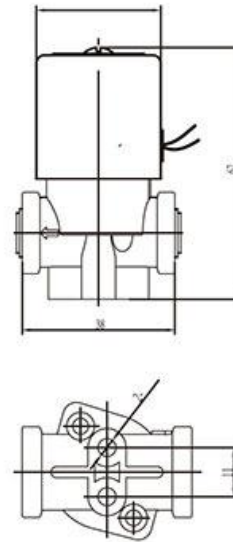


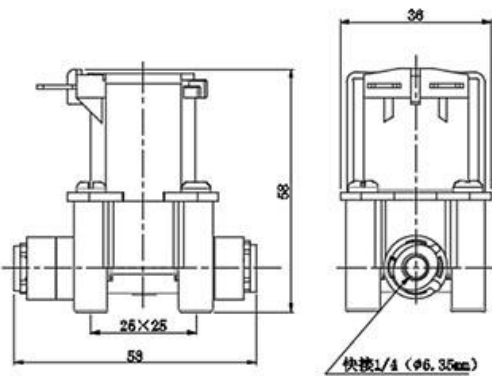
1			2	3	4	5	6	7	8
AC16			Coil Types	Voltage	Seal Material	Body Material	Pipe Size	Orifice	Options
A	C	161	W	A20	E	37	02	10	
A: Direct Acting	C: Normally Closed	Series 161 162 163 164 165	N=Lead Wires, Water-light, Fully Encapsulated W=Iron shell lead type L=Plastics seal insert type	A10=AC110V A20=AC220V D12=DC12V D24=DC24V D36=DC36V	E=EPDM	37=Plastics	01=1/8" 02=1/4"	R3=2.5 10=10	N=NPT Other threads can be customized K=Quick pipe R1/4 (φ 6.35mm)



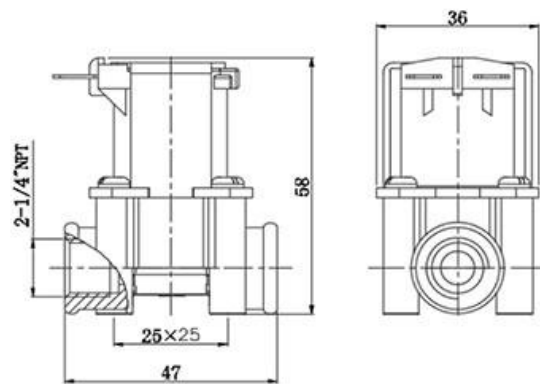
AC161



AC162



AC164



AC165

characteristic:

- 1、2/2-way Direct Acting、Open when energized, closed when de-energized
- 2、Can be used for RO machine automatic water intake
- 3、Small volume, quick response ,large flow, simple structure

Control: Direct Acting

Body Material: PP

Body pipe: 1/8(black)、1/4(white)

Maximum: water

Maximum Pressure Resistance: 174PSI

Maximum Work Pressure: 0~120PSI

Ambient Temperature: 0°C~65°C

Install: Flow as the arrow,Horizontal installation

Standard Voltage: AC: 220V/50HZ,
AC110V DC: 24V, 12V

Voltage fluctuations: +10%~-10%

Protection Level: IP65 100%ED

Temperature resistance level:
Class 130°C B级

Seal: EPDM(E) (-30~+130°C)

Electrical connection:Iron shell lead type ,
Length 30cm

Plastics seal insert type

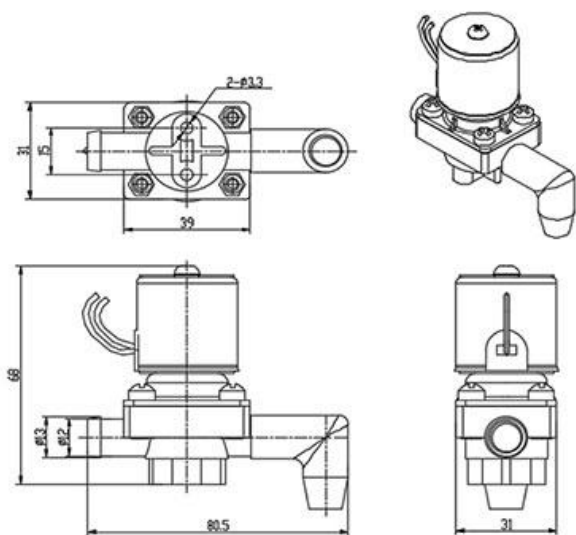
Lead Wires,Water-light,Fully Encapsulated



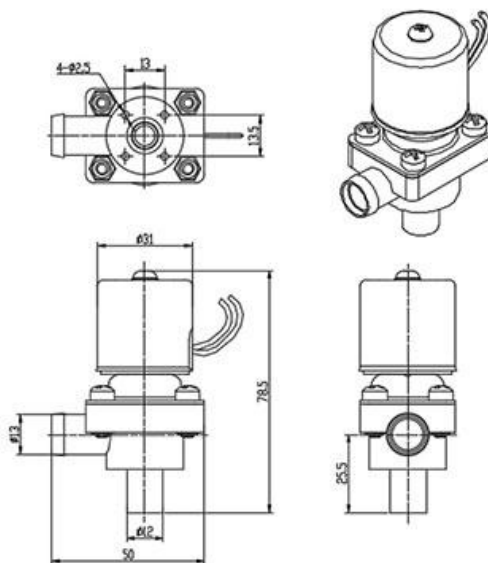
Valve Selection Lis

Pipe Size G	Orifice mm	CV rate	Pressure (bar)		Coil Type	Power		Externsions Dimensions L x W x H	Weight KG	Model Code 220VAC 50/60HZ
			Water			AC 220V	DC 24V			
			AC	DC						
1/8"	2.5	0.21	0-120	0-120	W	7	5	39×31×67	0.12	AC161WA20E3701R3N
1/4"	2.5	0.21	0-120	0-120	W	7	5	39×31×67	0.12	AC161WA20E3702R3N
R14 (φ 6.35mm)	2.5	0.21	0-120	0-120	W	7	5	38×31×62	0.12	AC162WA20E3702R3K
			0-120	0-120						
1/4"	10	1.9	2.9-116	2.9-116	L	5.6	5.6	47×36×58	0.11	AC164LA20E370210N
R14 (φ 6.35mm)	10	1.9	2.9-116	2.9-116	L	5.6	5.6	58×36×58	0.11	AC165LA20E370210K

1			2	3	4	5	6	7
AC16			Coil Types	Voltage	Seal Material	Body Material	Orifice	Options
A	C	166	W	D24	S	37	08	
A: Direct Acting	C: Normally Closed	Series 166 167	W=Iron shell lead type	A20=AC220V D12=DC12V D24=DC24V D36=DC36V	S=Silicone Rubber	37=Plastics	08=8.0 09=9.0	Z=External rectifier C=Intubation connection



A66



A67

- 1、 2/2–way Direct Acting, Open when energized, closed when de–energized
- 2、 Food grade diaphragm type, medium does not contact metal
- 3、 Can be used in RO machine effluent system
- 4、 Small volume, quick response, large flow, simple structure

Control: Diaphragm type direct drive type

Body Material: PP

Use medium: hot water, cold water

Maximum Pressure Resistance: 1 PSI

Maximum Work Pressure: 1.5PSI

Medium temperature: –10℃~100℃

Ambient Temperature: –10℃~40℃

Install: Flow as the arrow, Horizontal installation

Standard Voltage: AC: 220V/50HZ

DC24V, 12V

Voltage fluctuations: +10%~-10%

Protection Level: IP00

Temperature tolerance grade: Class 130℃ B level

Seal: Silicone Rubber (S) (-50~+200℃)

Electrical connection: Direct outgoing type ,
Line length 30cm



AC167



AC166

Valve Selection Lis

Pipe Size	Orifice mm	CV rate	Pressure (PSI)		Coil Type	Power	Externsions Dimensions L×W×H	Weight KG	Model Code 24VDC
			water						
			AC	DC					
12	8	0.21	0-1	0-1	To configure	DC 24V	80.5×31×68	0.14	AC166WD24S3708C
12	9	0.21	0-1	0-1	To configure	DC 24V	50×31×78.5	0.14	AC167WD24S3709C